

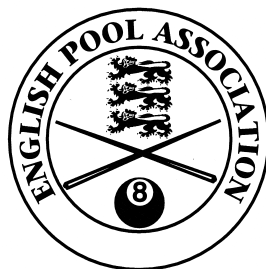


ENGLISH POOL ASSOCIATION

RECOGNISED BY THE SPORTS COUNCIL AS THE
GOVERNING BODY FOR POOL IN ENGLAND.

www.epa.org.uk

ENGLAND
TEAM RULES



ENGLISH POOL ASSOCIATION

ENGLAND

NATIONAL TEAM RULES

2018

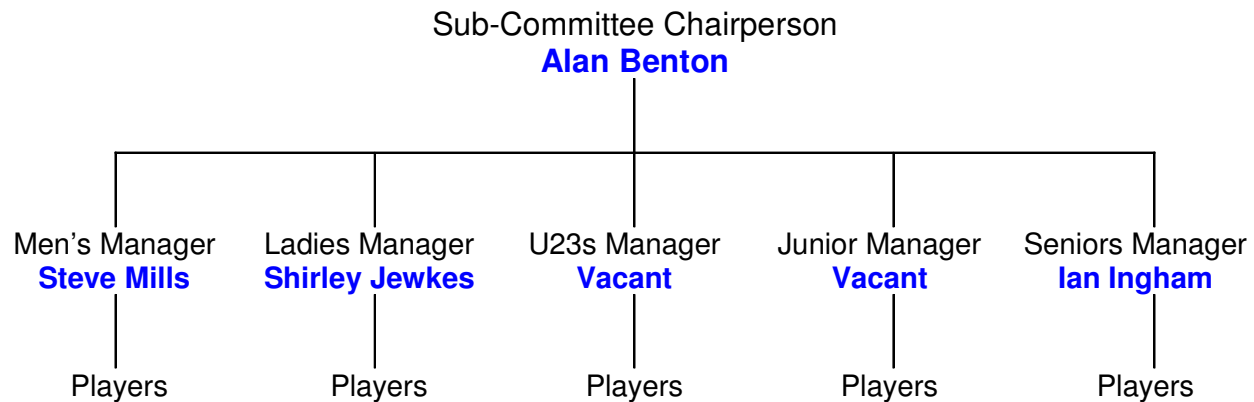


ENGLISH POOL ASSOCIATION

RECOGNISED BY THE SPORTS COUNCIL AS THE
GOVERNING BODY FOR POOL IN ENGLAND.

www.epa.org.uk

ENGLAND
TEAM RULES



The England Teams sub-committee management consists of E.P.A Sub Committee Chairperson- Men's –Ladies – U23s – Junior & Senior Team Managers.

The structure of the sub-committee is designed so that the players from the various sections report into the appropriate Manager, who reports into the Chairperson. The Chairperson reports into the National Association Executive Committee.

Any issue that a player has must first be reported to the appropriate Manager. If the Manager can not resolve the issue, then the Manager should advise the player that the matter will be referred to the sub-committee Chairperson.

After one month of being advised that the issue is being referred, if the player has not been contacted by the Chairperson/Manager then the player should contact the National Secretary directly.

National Criteria to be an English Pool Association Team Member.

A: Only players recognised and endorsed by the English Pool Association are eligible to represent England.

B: To qualify to become a recognised player for England, the player must meet one of the following criteria:

- 1: Must have been born in England.
or
- 2: Must have a parent born in England.
or
- 3: Must have a Grandparent born in England.
or
- 4: Must hold Citizenship in England.

C: England players must be English County Association I.D Registered Membership players and the rules applying to players not representing other organisations or playing in events in direct competition with the EPA apply. This includes players playing in other cue-sports events in preference to playing in organised England matches. Dispensation may be requested for friendly Internationals, however for the World Championships, European Championships and Home Internationals dispensation on these grounds will not be given.



ENGLISH POOL ASSOCIATION

RECOGNISED BY THE SPORTS COUNCIL AS THE
GOVERNING BODY FOR POOL IN ENGLAND.

www.epa.org.uk

ENGLAND
TEAM RULES

No player will be allowed to play for another Country, once he/ she has played for a Country, unless the player emigrates and takes up the nationality of that Country.

Sub-Committee Chairperson's role.

The Sub Committee Chairperson must report into the National Association Committee via the regular National Committee Meetings on the sub-committee's activities since the last meeting.

The Sub Committee Chairperson must act in a fair and honest way in all matters relating to the role, and in the best interest of the National Association.

The Sub Committee Chairperson will communicate regularly with all the Manager's and advise them on any matter relating to their section.

Any disputes which the Manager can not resolve will be dealt with by the Sub Committee Chairperson. If the Sub Committee Chairperson can not resolve the dispute then it should be referred to the National Association at the next available National Committee Meeting.

Manager's role.

The England team Manager's must act in a fair and honest way in all matters relating to their role, and in the best interest of the National Association.

The England team Manager's must report into the sub-committee Chairperson. The Manager's are responsible for their section only.

Providing that the Manager acts in accordance with these rules and in the best interest of the Association, then the Manager can perform his/her duties as they see appropriate.

The Manager is expected to be at all England matches (including trials) and set the standard of behaviour that the EPA expects the players to follow.

The England team Manager will inform the players required for an event in advance of the date of the match in writing or email. Positive confirmation is required from each player as to availability, one way or the other.

Penalties imposed for failure to attend events will be at the Manager's discretion. The English Pool Association (EPA) disciplinary rules should be used as a guide to making any decision.

The manager can arrange friendly games against other countries or EPA regions/county. Subject to funds being available in their section of the England budget each section is allocated a fund of £1000 to assist in funding friendlies and or internal trials, travel costs when awarded will also come out of this fund. Minimum of two matches per year, plus two sets of internal trials.

Selection of a team is the Manager's responsibility, but if appropriate, it should be discussed with the team captain. Ultimately it is the Manager's decision.

Sub-committee meetings must be attended if called by the sub-committee Chairperson.

All team profiles and pictures are expected to be completed by the relevant manager and forwarded to the sub-committee Chairperson in turn passed to the EPA Webmaster directly after the team trials. (All squad members should fill in a profile form on the day of the trials not afterwards).

All expense commitments must be pre-approved by the sub-committee Chairperson. All expense claims must be made through the sub-committee Chairperson.

Managers Official Dress.



ENGLISH POOL ASSOCIATION

RECOGNISED BY THE SPORTS COUNCIL AS THE
GOVERNING BODY FOR POOL IN ENGLAND.

www.epa.org.uk

ENGLAND
TEAM RULES

Men's: Navy blazer/black waistcoat, white shirt, EPA tie plain black trousers and plain black shoes.
Ladies: Navy blazer/black waistcoat, white blouse, EPA tie or a cravat, plain black trousers/skirt and plain black shoes.
EPA will provide polo shirts when appropriate.

Player's role.

Player's must inform the Manager as soon as possible and no later than five days after being selected for an event whether they are available to play. Player's are allowed two apologies per year. The "Year" in question is relevant to the calendar year.

Any player failing to contact the manager within the above timescale will be replaced in the squad for that event and then asked by the manager to explain their reasons for not responding. Disciplinary action may be taken.

All players representing their country are expected to conduct themselves in a friendly and honest manner. Any misconduct will be taken seriously.

All selected players at the event venue for an England match must be dressed in accordance with the EPA dress code. Any player attending an event incorrectly dressed will not be allowed to play and disciplinary action may be taken.

Player's who inform the manager that they are unable to attend, and are then found to have attended an alternative competition or event without prior permission will face disciplinary action.

Player's are not allowed to leave an event early, unless agreed with the team Manager.

Player's arriving late at team meetings may face disciplinary action.

Player's must ask permission to play in any pool match that is not an official EPA event, or play in an unofficial England Team.

Player's that play or administer in events that are in direct competition with the English Pool Association, will be subject to suspension and disciplinary proceedings.

England players must make themselves available to play in at least 50% of their respective Inter-county matches/fixtures throughout each season. A review of the National Ranking list will take place prior to team selection for each Major event and also at the end of December each year to ensure players have fulfilled their 50% commitment. Failure to comply will result in an investigation which could lead to suspension from the England team.

All players must hold a current E.P.A I.D. registration membership Card

Dress Code.

MEN/ SENIORS.

(Seniors / Under 23 may be Male/Female- if Female must comply with Ladies Dress Code)

Black long sleeved shirt. (No sponsors logo only flag may be added to cuff).

Maroon bow tie. (available from EPA)

England Team waistcoat (Black & Wine in colour)

Plain Black Trousers (Tailored)

Plain Black shoes

LADIES.

Black long sleeves blouse (No sponsors logo only flag may be added to cuff).



ENGLISH POOL ASSOCIATION

RECOGNISED BY THE SPORTS COUNCIL AS THE
GOVERNING BODY FOR POOL IN ENGLAND.

www.epa.org.uk

ENGLAND
TEAM RULES

Maroon bow tie. (Available from EPA)
England Team waistcoat (Black & Wine in colour)
Plain Black Trousers/Skirt (minimum knee length skirt/trousers (Tailored)
Plain Black shoes

U23s / JUNIORS.

(U23's/Juniors may be Male/Female- if Female must comply with Ladies Dress Code).

Black Shirt (No sponsors logo only flag may be added to cuff).
Maroon bow tie. (Available from EPA)
England Team waistcoat (Black & Wine in colour)
Plain Black Trousers/Skirt (minimum knee length skirt/trousers (Tailored)
Plain Black shoes.

General Rules

Trialists are taken from the current EPA ranking lists: Male, Female, Juniors, Seniors & Under 23s will be taken from the National Men's & Ladies integrated ranking point lists.

There will be seven trialists per Region unless there is a shortfall with re-trialists, and then the trial organiser will use the EPA National ranking point list to fill the empty places.

Men's

Men's squad is 16 players, 8 players are retained each year and 8 will go back to the trials to retrial.

An internal ranking system is used at events. Three points per frame won in the round robin stages of each event (WC/Euros (2 pts per Euro B Team frame win)/Homes/Anglo-Welsh & Anglo-Scots), 1.5 pts per frame won in other Friendlies, plus the following points are awarded for the singles competition at the Major events: Each match won per round, from the Last 64, gains 2 points bonus along with the following. Bearing in mind that seeded players may play less rounds and start from the Last 32.

Winner	Twelve points
Runner-Up	Ten points
Semi-Finalist	Eight points
Quarter-Finalist	Six points
L16	Four points
L32	Two points

This internal system constitutes the way the top 8 players are retained each year.

Ladies

Ladies squad is 16 players, 8 players are retained each year and 8 will go back to the trials to retrial.

At the end of the season two players from the current year's world team will be retained automatically due to their performance over the last season. The remaining five players' from the current year's world team will play off against each other for three places, the two players that do not make it, will then go into a playoff with the other members of the England squad and they will be playing for the remaining two places. The one to get through first will be named in the world team/home international and European team for the oncoming year. The seventh player to be retained and will have a chance



ENGLISH POOL ASSOCIATION

RECOGNISED BY THE SPORTS COUNCIL AS THE
GOVERNING BODY FOR POOL IN ENGLAND.

www.epa.org.uk

ENGLAND
TEAM RULES

to play off for a place in the world championships against the players who qualified via the national trials.

Juniors

Junior squad is 16 players, 8 players are retained each year and 8 will go back to the trials to retrial.

Team Members: Player's may be male or female.

8 players will be retained on their performances in the previous year. (where possible)

Age group of players: Under 18 years old on the 31st December in the year before the Trials.

EPA National junior team players on becoming 18 years old will automatically be allowed to trial for The EPA U23 year old squad.

Retention rules may vary because of age.

In the Juniors it may occur that more than 8 player's become 18, hence more player's will have to be trialled to keep the squad up to the National agreed level.

Under 23

Under 23 squad is 16 players, 8 players are retained each year and 8 will go back to the trials to retrial.

Team Members: Player's may be male or female.

8 players will be retained on their performances in the previous year. (Where possible)

Age group of players: Under 23 years old on the 31st December in the year before the Trials.

Player's lower limit. In the event of a Male/ female player (under 23) not qualifying for Men's/ Ladies trials the player would be eligible to trial for the Under 23s squad. In the event of a junior player not qualifying for the junior trials, they would be eligible to trial for the Under 23s as long as they comply with age requirements 17 years old on day of trial.

If a current under 23s EPA team member, qualifies for a full team trial, the player must declare which England team trial they wish to play in.

A Player trialling for the Under 23s cannot be a member of another England squad.

Retention rules may vary because of age.

An internal ranking system is used at events where all squad members are able to participate. One point is awarded for each frame won or the use of % if the number of frames played is uneven. The internal ranking system is a guide which the Manager uses to assess which players will be playing in The major tournaments.

Seniors

Senior squad is 12 players, 4 players are retained each year and 8 will go back to the trials to retrial.

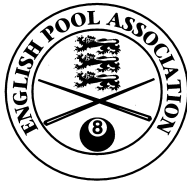
Team Members: Player's may be male or female.

Teams are selected on trialist qualification placing from the Regional Ranking Lists

4 players from the internal Ranking list will be retained, 8 players will be sent back for re-trials.

12 players' constitutes an EPA Senior squad.

An internal ranking system is to be used at events. One point per frame won in the round robin stages of each event plus the same points awarded for the Senior's singles event as the Men's



ENGLISH POOL ASSOCIATION

RECOGNISED BY THE SPORTS COUNCIL AS THE
GOVERNING BODY FOR POOL IN ENGLAND.

www.epa.org.uk

ENGLAND
TEAM RULES

A ranking listing to be produced after each major event and at the end of each year to assist in trialist re-selection or retention where applicable.

All Teams

Once a player qualifies for the England teams a letter of congratulations on qualifying and a waistcoat measurement slip will be handed out. The measurement slip should be returned to the manager immediately so a waistcoat can be ordered. EPA will supply all new players with a team waistcoat and polo shirt at EPA expense.

European Championships/ World Championships: Selections.

The following rules reference numbers in squads is subject to the Event Organisers decision.

If the current World Champion of either the Men's, Ladies, Over 50's, Under 23's, Junior & Senior sections is English, and not part of a national squad, then they are entitled to play in the European Championships singles event at their own cost. (as per EEPF rules)

World, European and Home International rules regarding the age criteria are set by the governing body for that event.

The squad sizes for each event and in each category are set by the relevant governing body for that event. The guidelines set out below are those as in place for 2018. Squad numbers should be as identified but may be reduced to no less than one player over the minimum team selection number of players in certain circumstances.

Juniors.

The following rules reference numbers in squads is subject to the Event Organisers decision.

European Junior/ World Junior rule: A junior must be under 18 on 31st December of the prior year to the European Championships to qualify to play in the event.

World Championships. The team manager has a squad of seven players for the World Championships and can select all seven for any match. Each match is played by five players with the option to use two reserves. All players in the squad can go into the singles event.

European Championships. The team manager has a squad of seven players for the European Championships and can select all seven for any match. Each match is played by five players with the option to use two reserves. All players in the squad can go into the singles event.

Home Internationals. The team manager has a squad of seven players for the Home Internationals and can select all seven players for any match. Each match is played by five players with the option to use two reserves. All players in the squad can go into the singles event.

Under 23s.

The following rules reference numbers in squads is subject to the Event Organisers decision.

World Championships. The team manager has a squad of five players for the World Championships and can select all five for any match. Each match is played by three players with the option to use two reserves. All players in the squad can go into the men's singles event, as well as the U23 singles event.



ENGLISH POOL ASSOCIATION

RECOGNISED BY THE SPORTS COUNCIL AS THE
GOVERNING BODY FOR POOL IN ENGLAND.

www.epa.org.uk

ENGLAND
TEAM RULES

World Championship rule: An U23 player must be under 23 on 31st December of the prior year to the World Championships to qualify to play in the event.

European Championships. The team manager has a squad of five players for the European Championships and can select all five for any match. Each match is played by three players with the option to use two reserves. All players in the squad can go into the men's singles event, as well as the U23 singles event.

European U23s rule: An U23s Player must be under 23 on 31st December of the prior year to the European Championships to qualify to play in the event.

Home Internationals. The team manager has a squad of five players for the Home Internationals and can select all five players for any match. Each match is played by three players with the option to use two reserves. All players in the squad can go into the men's singles event.

Ladies.

The following rules reference numbers in squads is subject to the Event Organisers decision.

World Championships. The team manager has a squad of seven players for the World Championships and can select seven for any match. Each match is played by five players with the option to use two reserves. The team manager has seven singles places in the world championships.

European Championships.

The team manager has a squad of seven players for the European Championships and can select all seven for any match. Each match is played by five players with the option to use two reserves. All Seven players in the squad can go into the Ladies singles event.

Home Internationals. The team manager has a squad of seven players for the Home Internationals and can select all seven players for any match. Each match is played by five players with the option to use two reserves. All Seven players in the squad can go into the Ladies singles event.

Men's.

The following rules reference numbers in squads is subject to the Event Organisers decision.

World Championships. The team manager has a squad of ten players for the World Championships and can select all ten players for any match. Each match is played by seven players with the option to use all reserves. All players in the squad can go into the singles event.

European Championships. The team manager selects three squads of five players for the European Championships. All players in the squad can go into the singles event.

Home Internationals. The team manager has a squad of ten players for the Home Internationals and can select seven players for any match. Each match is played by six players with the option to use all reserves. All players in the squad can go into the singles event.

Seniors.

The following rules reference numbers in squads is subject to the Event Organisers decision.



ENGLISH POOL ASSOCIATION

RECOGNISED BY THE SPORTS COUNCIL AS THE
GOVERNING BODY FOR POOL IN ENGLAND.

www.epa.org.uk

ENGLAND
TEAM RULES

World Championships. The team manager has a squad of 7 players for the World Championships and can select 5 players for any match. Each match is played by five players with the option to use two reserves.

All players in the squad can go into the Seniors and Men's singles events.

European Championships. The team manager has a squad of 7 players for the World Championships and can select 5 players for any match. Each match is played by five players with the option to use two reserves.

All players in the squad can go into the Seniors and Men's singles events

Home Internationals. The team manager has a squad of 7 players for the World Championships and can select 5 players for any match. Each match is played by five players with the option to use two reserves.

All players in the squad can go into the Seniors and Men's singles events